
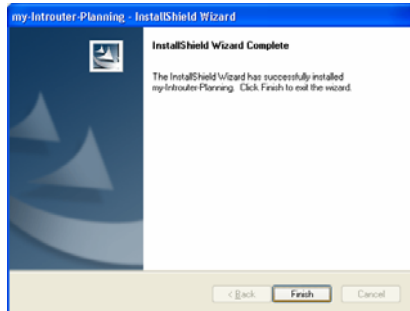


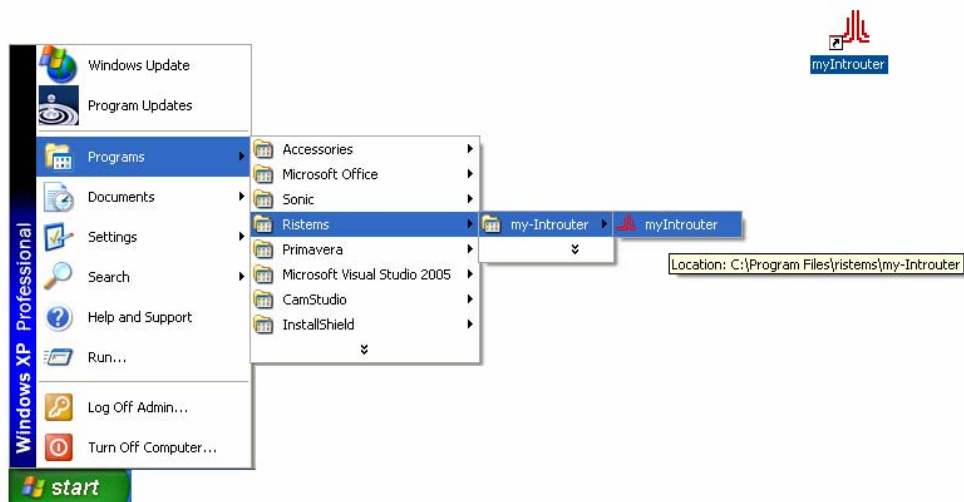
Step 1: Installation

- Visit www.introuter.com
- Click on the button  and save Setup.exe
- Run the downloaded file Setup.exe
- Answer questions or proceed with default settings and complete the installation.
- At the end of successful installation you will see the following window.



Step 2: Run myIntrouter

- Double-click on the screen short-cut "myIntrouter"
- Or run the program from Start => Programs => Ristems => myIntrouter => myIntrouter



Step 3: Login for Intrrouter Planning

- Type username “demo” and password “planning” and click on login button

**Step 4: Login for Intrrouter Progress**

- Type username “demo” and password “progress” and click on login button