



If you are new to InrouterPlanning
then please read the following PDFs before reading this document

1. Introduction to Inrouter.PDF
2. Inrouter Modules.PDF

www.inrouter.com



Description

INTROUTER PLANNING is an On Demand Service to visualize your projects (most suitable for multi-story buildings). Its unique feature is that, it does not require any CAD drawings to generate the simulation views. It will generate automatically from the project elevation (photo-realistic presentation image) using its unique image processing engine. Inrouter Planning is suitable to use during the project planning stage or before the construction at site.

Output

- Planned view of your project on any specified date
- Floor based progress histograms
- Summary histograms for any items coded in Primavera. Example:- Core walls, structure, MEP, Finishes
- Generates high resolution planned progress images for printing and presentations.
- Monthly/ Weekly/Any Date simulation facility

Input required

- Rendered elevation image file of the project
- Primavera Project coded in levels using activity codes

Benefits

- Better understanding of your project in different planning stages
- Enhance your presentations to your clients

You can further understand the output of Inrouter Planning by viewing a sample project described in the following sessions. It is free and completely online. If you need further assistance visit www.inrouter.com

Sample project monitoring for

Note 1: Follow step-by-step instructions

Note 2: System requirements- OS: Windows XP, Internet Explorer and Internet Connection

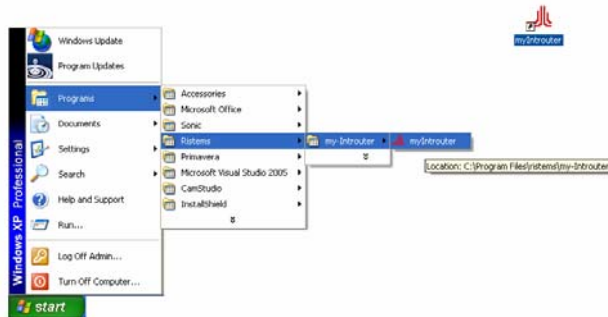
Step 1: Installation

- If myIntrouter is already installed in your computer skip Step 1
- Visit www.introuter.com
- Click on the button and save Setup.exe
- Run the downloaded file Setup.exe
- Answer questions or proceed with default settings and complete the installation.
- At the end of successful installation you will see the following window.



Step 2: Run myIntrouter

- Double-click on the screen short-cut "myIntrouter"
- Or run the program from Start => Programs => Ristems => myIntrouter => myIntrouter

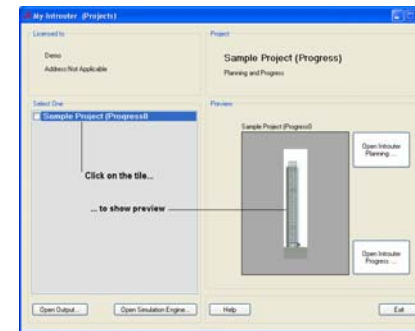


Step 3: Login and select Sample Project

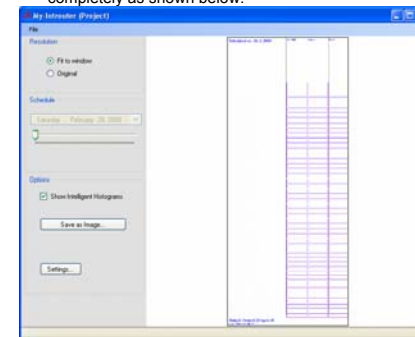
- Type username "demo" and password "planning" and click on login button



- Click on one project title under the category "select one" and allow for few seconds to show the project thumbnail as show below.

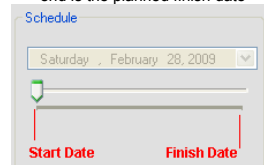


- Now, click on the button "Open Introuter Planning" and wait till to load the program completely as shown below.

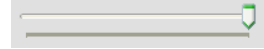


Step 4: Simulate planned view for any specified date

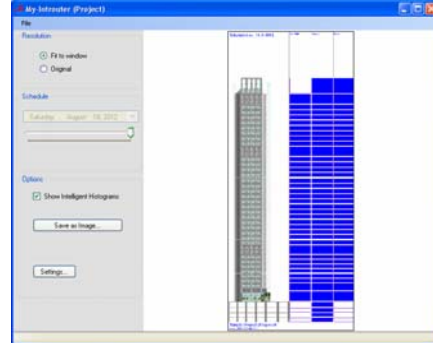
- Left end of the sliding bar under "schedule" is the project planned start date and the right end is the planned finish date



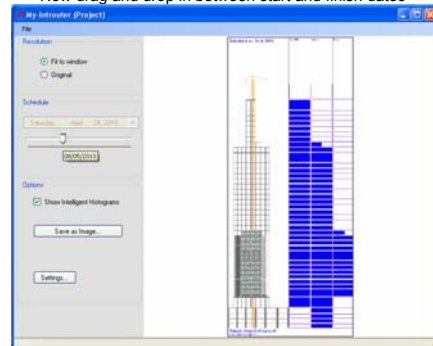
- Initially, the pointer points as the start date, thus the output shows nothing.
- Drag the pointer and drop at the end of the bar as shown



- Check the display (similar the output as shown below)



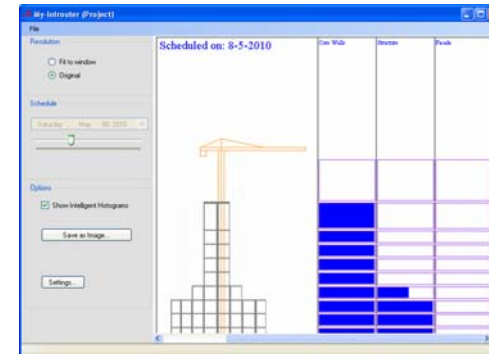
- Now drag and drop in between start and finish dates



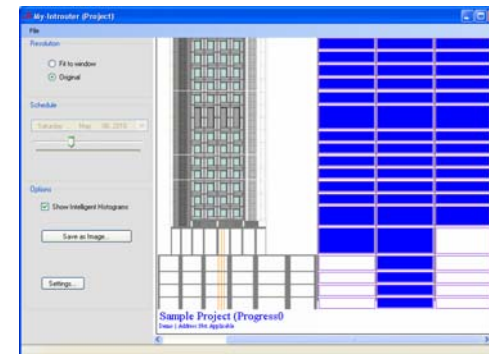
- While dragging you can see the date on which you are going to drop. This method you can use to select for a specific date. Try different dates to see different output.

Step 5: Screen resolution

- Default setting is to fit the view on the myIntrouter output window
- Select "Original" option of the resolution category, which will open the view in actual resolution of the image as show.



- See the planned date printed on the top of the elevation
- Use the scroll bars to slide the picture to view on the screen



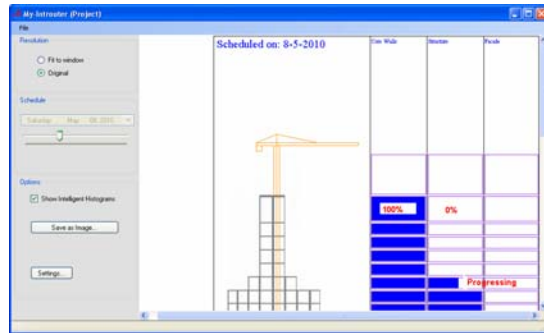
- Click on the "Fit to window" to revert to the fitted view.

Step 6: Save Image

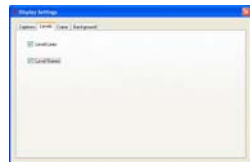
- Click on the button "Save as image"
- Type name of the JPG image
- Select location of the file to be saved
- You can use this JPG image for printing and presentation

Step 7: Intelligent Histograms

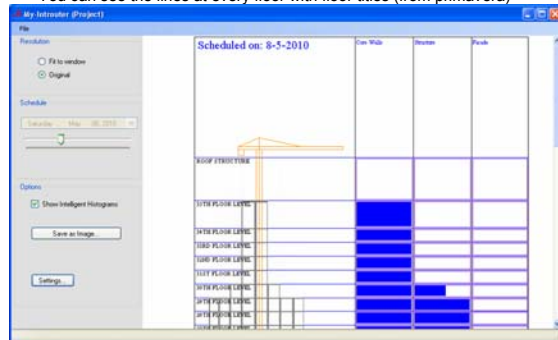
- On the right side of the elevation, you can see some histograms with different titles.
- These intelligent histograms are the summaries of categories defined in the primavera E.g.: Core walls, Structure, MEP, Finishes etc.



- Visibility of the intelligent histograms can be controlled by the check box "Show Intelligent Histograms"
- These histograms are generated automatically in every floors
- Shows the progress the item in the floor (Refer the picture above for 0%, 100% and progressing cases)
- Click on the settings and enable level lines and level names under levels

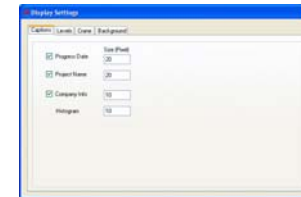


- You can see the lines at every floor with floor titles (from primavera)

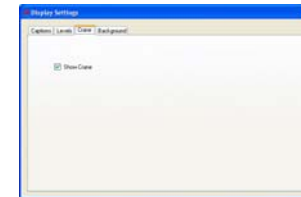


Step 8: Settings

- You can change text sizes and visibility of captions in Captions tab



- Visibility of cranes in cranes tab
- Cranes are linked with crane installation and removal activities in primavera, thus the display of cranes are controlled by the scheduled dates in the corresponding activities in the primavera



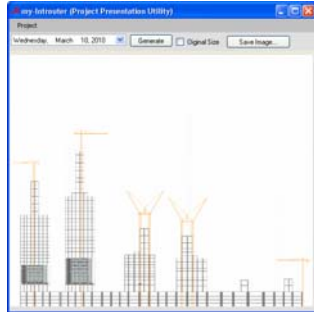
- You can also set background with standard sky or with any specified image using background option in the background tab



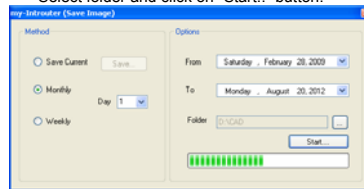
- Try changing some of the above settings

Step 9: Multiple Projects

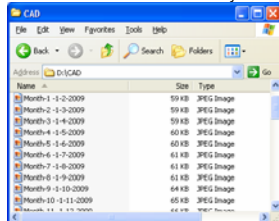
- Close the window and go to project selection form.
- Click on the button "Open Simulation Engine..." below the project titles.
- Wait till the program is loaded completely
- Here you can view your entire projects simultaneously
- Select the date on which you want to simulate from the date picker and click on "Generate" button.

**Step 10: Generate Monthly or Weekly Progress Images**

- You can generate monthly or weekly progress images in a selected folder for printing and presentation purposes.
- This options is presently disabled for single project
- Click on "save image..." button
- Select appropriate options as shown below (self explanatory)
- Select folder and click on "Start.." button.



- This may take several minutes to simulate views.
- At the end of the process check the output folder you specified
- File names are automatically named with month count or week count with dates as shown

**Important Note:**

- Intrrouter Planning is limited to use only during the project planning stage
- Intrrouter Progress is the full version of Intrrouter with lot of useful reports and drawings
- Refer *Intrrouter Progress.PDF* for more information (available at www.introuter.com)